

KARIBAN

REFERENCE : K232

SIZES : S_M_L_XL_XXL_3XL

COMPOSITION :

Main fabric : Polyester / Combed Cotton pique 65/35 - 220
65%polyester / 35%cotton

Main fabric : Polyester / Combed Cotton pique 65/35 - 220 For
contrasted yokes 65%polyester / 35%cotton

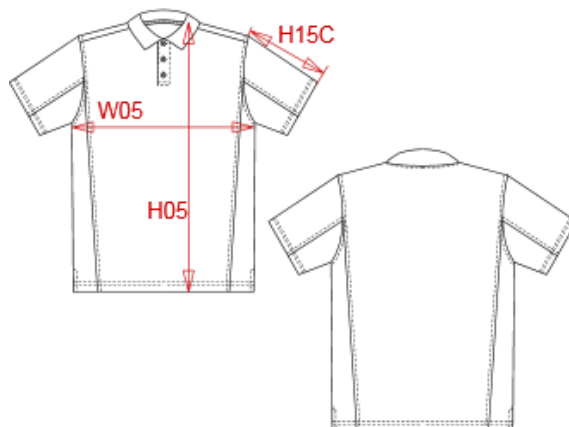
WEIGHT :

Main fabric : 220 gsm

Main fabric : 220 gsm

ARTICLE WEIGHT :

300 gr/pc



DESCRIPTION	
Français :	Polo bicolore
English :	Bi-colour short sleeve polo shirt
Nederlands :	Tweekleurige polo
Deutsch :	Zweifarbiges polohemd
Español :	Polo piqué bicolor
Italiano :	Polo bicolore
Português :	Polo pique bicolor

COLORS	PANTONE SERIGRAPHIE
White / Red	White / 200C
Navy / White	433C / White
White / Royal blue	White / 287C
Red / Black	200C / Black
Black / Lime	Black / 367C
Navy / Sky blue	433C / 5425C
Black / Slate grey	Black / 424C
Black / Orange	Black / 1585C
Light grey / Red	416C / 200C
Dark grey / Orange	447C / 1585C

MEASUREMENT							
Description	S	M	L	XL	XXL	3XL	
H05 (M) Hauteur totale / Total height	70	72	74	76	78	80	
W05 (M) 1/2 largeur poitrine / 1/2 chest width	50	53	56	59	62	65	
H15C (M) Longueur manche courte / Short sleeve length	22,25	23	23,75	24,50	25,25	26	

CARE LABEL				

PACKING	
Box	25 pcs / box S => L:60cm W:40cm H:15cm GW:7.65kg NW:6.15kg M => L:60cm W:40cm H:15cm GW:8kg NW:6.5kg L => L:60cm W:40cm H:15cm GW:8.55kg NW:7.05kg XL => L:60cm W:40cm H:15cm GW:8.95kg NW:7.45kg XXL => L:60cm W:40cm H:16cm GW:9.40kg NW:7.90kg 3XL => L:60cm W:40cm H:16cm GW:9.80kg NW:8.30kg