

PROACT.®

REFERENCE : PA482

SIZES : XS_S_M_L_XL_XXL_3XL

COMPOSITION :

Main fabric : Polyester Cool Plus / Polyester interlock 50/50 -
145 Fabric submit at test Drying Rate of Textiles at their
Absorbent Capacity: Air Flow method

WEIGHT :

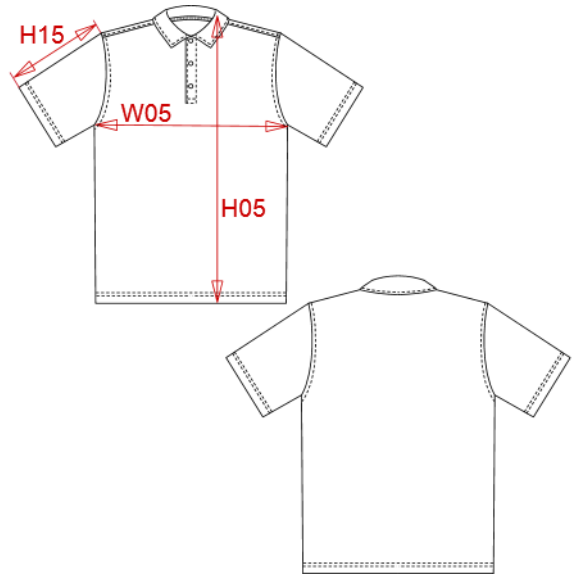
Main fabric : 145 gsm

TECHNICAL DETAIL :

Moisture control fabric

ARTICLE WEIGHT :

164gr/pc



DESCRIPTION							
Français : Polo respirant à séchage rapide							
English : Performance polo							
Nederlands : Ademende en sneldrogende polo							
Deutsch : Schnell Trockendes-Atmungsaktives Polohemd							
Español : Polo transpirable de secado rapido							
Italiano : Polo asciugatura rapida							
Português : Polo de homen de desporto							

COLORS	PANTONE SERIGRAPHIE
White	White
Red	200C
Black	Black
Navy	433C
Aqua blue	7690C
Lime	367C
Orange	1585C
Fine grey	877C
True Yellow	116C
Ice mint	573C
Grey melange	Based on 402C

MEASUREMENT							
Description	XS	S	M	L	XL	XXL	3XL
H05 (M) Hauteur totale / Total height	68	70	72	74	76	78	80
W05 (M) 1/2 largeur poitrine à 1.5cm de l'emmanchure / 1/2 chest width at 1.5cm below armhole	46	49	52	55	58	61	64
H15C (M) Longueur manche courte / Short sleeve length	20,75	21,50	22,25	23	23,75	24,50	25,25

CARE LABEL				

PACKING	
Box	25 pcs / box XS => L:60cm W:40cm H:14cm GW:5.1kg NW:3.7kg S => L:60cm W:40cm H:14cm GW:5.3kg NW:3.9kg M => L:60cm W:408cm H:14cm GW:5.6kg NW:4.2kg L => L:60cm W:408cm H:14cm GW:5.9kg NW:4.5kg XL => L:60cm W:408cm H:14cm GW:6.1kg NW:4.7kg XXL => L:60cm W:408cm H:cm GW:kg NW:kg 3XL => L:60cm W:408cm H:cm GW:kg NW:kg