

# KARIBAN

**REFERENCE :** K221

**SIZES :** M\_L\_XL\_XXL

**COMPOSITION :**

Main fabric : Cotton french rib - 330 For solid colors 100% cotton

Main fabric : Cotton / Viscose french rib 85/15 - 330 For heather colors 85%cotton / 15%viscose

Fabric 1 : Cotton twill - 220 For under collar and concealed buttoned placket 100%cotton

Fabric 2 : Cotton denim - 220 For under collar and concealed buttoned placket 100%cotton

**WEIGHT :**

Main fabric : 330 gsm

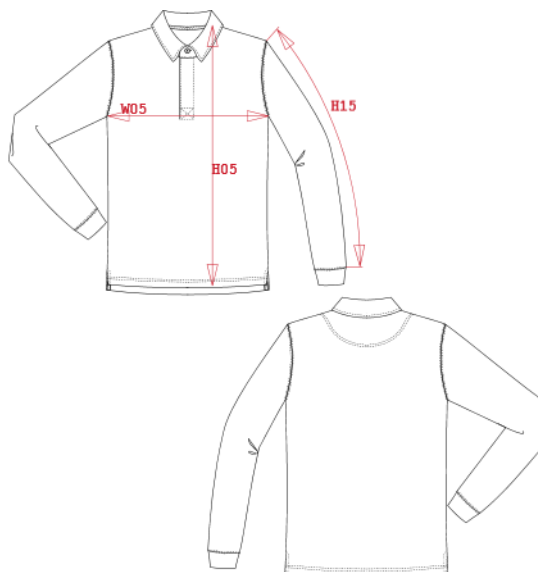
Main fabric : 330 gsm

Fabric 1 : 220 gsm

Fabric 2 : 220 gsm

**ARTICLE WEIGHT :**

517 gr/pc



DESCRIPTION	
<b>Français :</b>	Polo manches longues
<b>English :</b>	French rib polo sweatshirt
<b>Nederlands :</b>	Polo met lange mouwen
<b>Deutsch :</b>	Langarm polohemd
<b>Español :</b>	Polo de manga larga
<b>Italiano :</b>	Polo uomo maniche lunghe
<b>Português :</b>	Polo de manga comprida

COLORS	PANTONE SERIGRAPHIE
Black / Dark grey	Black / 447C
Navy / Jean	296C / Jean
Stone grey heather / Dark grey	Based on 416C / 447C

MEASUREMENT						
Description	M	L	XL	2XL		
<b>H05</b> Hauteur totale dvt / Front total height	74	77	80	83		
<b>W05</b> 1/2 largeur poitrine / 1/2 chest width	55	58	61	64		
<b>H15</b> Longueur manche / Sleeve length	54,75	57	59,25	61,50		

CARE LABEL				

PACKING	
Box	25 pcs / box M => L:60cm W:40cm H:28cm GW:12.30kg NW:11kg L => L:60cm W:40cm H:28cm GW:13.3kg NW:12kg XL => L:60cm W:40cm H:30cm GW:13.8kg NW:12.5kg XXL => L:60cm W:40cm H:30cm GW:14.3kg NW:13kg