



**5000**

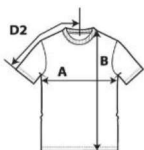
**Heavy Cotton Adult T-Shirt**



**DETAILS**

**Fabric** 100% Cotton, 180.0 G/SqM (White 170.0 G/SqM)  
**Yarn Count** 20/1  
**Features** Classic midweight fabric  
 2.2 cm rib collar  
 Taped neck and shoulders  
 Twin-needle sleeve and bottom hems  
 Classic fit, tubular body  
 Grey pearlized tear away label

**Country of Origin** Dominican Republic, Haiti, Honduras, Nicaragua, Bangladesh  
**Case Packs** S - 2XL 72 PIECES  
 3XL 36 PIECES  
 4XL - 5XL 12 PIECES  
**Colours** 50  
**SKU's** 280



**SPECIFICATIONS**

	Toi-	Toi+	S	M	L	XL	2XL	3XL	4XL	5XL
<b>Centimeters</b>										
<b>Chest (A)</b>	1.905	1.905	45.720	50.800	55.880	60.960	66.040	71.120	76.200	81.280
<b>Length from HPS (B)</b>	2.540	2.540	71.120	73.660	76.200	78.740	81.280	83.820	86.360	88.900
<b>Sleeve length (Center back) (D2)</b>	1.905	1.905	39.688	43.180	46.990	50.800	54.610	58.103	61.595	64.453
<b>Inches</b>										
<b>Chest (A)</b>	0.750	0.750	18.000	20.000	22.000	24.000	26.000	28.000	30.000	32.000
<b>Length from HPS (B)</b>	1.000	1.000	28.000	29.000	30.000	31.000	32.000	33.000	34.000	35.000
<b>Sleeve length (Center back) (D2)</b>	0.750	0.750	15.625	17.000	18.500	20.000	21.500	22.875	24.250	25.375

**COLOURS**

Colour	Code	Colour Chip	Sizes	Comments
Antique Cherry Red	246	[Red Chip]	S-2XL	90% Cotton, 10% Polyester
Antique Irish Green	248	[Green Chip]	S-2XL	90% Cotton, 10% Polyester
Antique Jade Dome	249	[Teal Chip]	S-2XL	90% Cotton, 10% Polyester
Antique Orange	252	[Orange Chip]	S-2XL	90% Cotton, 10% Polyester
Antique Sapphire	254	[Blue Chip]	S-2XL	90% Cotton, 10% Polyester
Azalea	071	[Pink Chip]	S-2XL	
Blackberry	278	[Dark Purple Chip]	S-2XL	50% Cotton, 50% Polyester
Cardinal Red	011	[Red Chip]	S-2XL	
Carolina Blue	109	[Blue Chip]	S-2XL	
Cobalt	445	[Dark Blue Chip]	S-2XL	
Cornsilk	475	[Yellow Chip]	S-2XL	
Daisy	098	[Yellow Chip]	S-2XL	
Forest Green	033	[Green Chip]	S-2XL	
Graphite Heather	516	[Grey Chip]	S-2XL	50% Cotton, 50% Polyester
Heather Sapphire	217	[Blue Chip]	S-2XL	50% Cotton, 50% Polyester
Heliconia	010	[Pink Chip]	S-2XL	
Indigo Blue	080	[Blue Chip]	S-2XL	
Kiwi	186	[Green Chip]	S-2XL	
Light Pink	020	[Pink Chip]	S-2XL	
Lilac	284	[Purple Chip]	S-2XL	50% Cotton, 50% Polyester
Lime	012	[Green Chip]	S-2XL	
Midnight	286	[Dark Blue Chip]	S-2XL	50% Cotton, 50% Polyester