

KARIBAN

REFERENCE : K265

SIZES : XS_S_M_L_XL_XXL

COMPOSITION :

Main fabric : Cotton single jersey - 180 For solid colors 100% cotton

Main fabric : Polyester / Cotton single jersey (24/1) 65/35 - 180 65%polyester/ 35%cotton

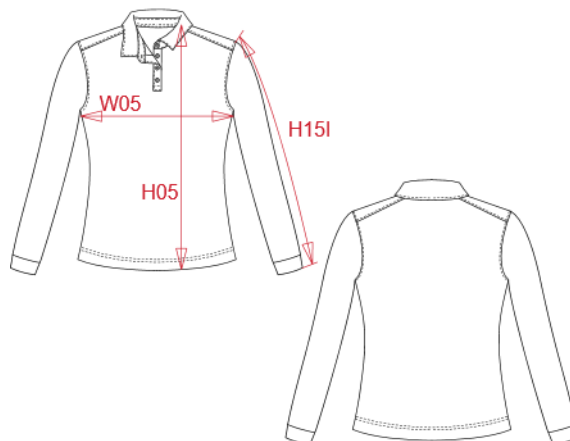
WEIGHT :

Main fabric : 180 gsm

Main fabric : 180 gsm

ARTICLE WEIGHT :

185 gr/pc



DESCRIPTION
Français : Polo jersey manches longues femme
English : Ladies' long sleeve jersey polo shirt
Nederlands : Damespolo lange mouwen van jersey
Deutsch : Langarm-Polohemd für Damen aus Jersey
Español : Polo jersey de manga larga mujer
Italiano : Polo jersey donna manica lunga
Português : Polo jersey de senhora de manga comprida

COLORS	PANTONE SERIGRAPHIE
Black	Black
Navy	433C
Grey heather	Based on 417C

MEASUREMENT							
Description	XS	S	M	L	XL	XXL	
H05 (L) Hauteur totale / Total height	60	62	64	66	68	70	
W05 (L) 1/2 largeur poitrine à 1.5cm de l'emmanchure / 1/2 chest width at 1.5cm below armhole	43	46	49	52	55	58	
H15B (L) Longueur manche avec poignet / Sleeve length with cuff	57,50	58,50	59,50	60,50	61,50	62,50	

CARE LABEL				

PACKING	
Box	30 pcs / box XS-S => L:60cm W:40cm H:14cm GW:7.20kg NW:5.50kg M-L => L:60cm W:40cm H:15cm GW:8.30kg NW:6.60kg XL-XXL => L:60cm W:40cm H:16cm GW:9.40kg NW:7.70kg