

KARIBAN

REFERENCE : K262

SIZES : S_M_L_XL_XXL_3XL

COMPOSITION :

Main fabric : Cotton single jersey - 180 For solid colors 100% cotton

Main fabric : Polyester / Cotton single jersey (24/1) 65/35 - 180 65%polyester/ 35%cotton

Main fabric : Cotton / Polyester single jersey 80/20 - 180 80% cotton / 20%polyester

Main fabric : Ring spun Single jersey Cotton / Viscose -90/10 - 180 90%cotton / 10%viscose

WEIGHT :

Main fabric : 180 gsm

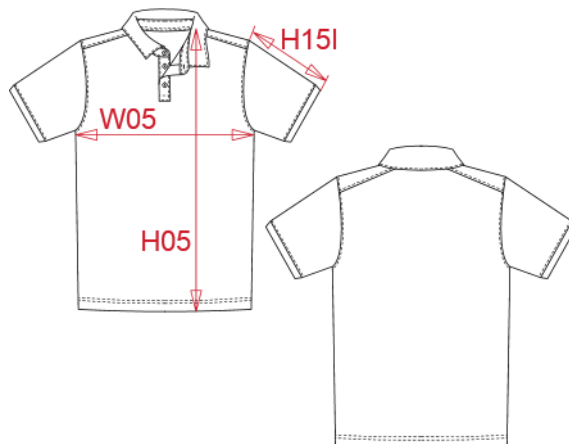
Main fabric : 180 gsm

Main fabric : 180 gsm

Main fabric : 180gsm

ARTICLE WEIGHT :

200 gr/pc



| DESCRIPTION | |
|---------------------|--------------------------------------|
| Français : | Polo jersey manches courtes homme |
| English : | Men's short sleeve jersey polo shirt |
| Nederlands : | Herenpolo korte mouwen van jersey |
| Deutsch : | Jersey-Kurzarm-Polohemd für Herren |
| Español : | Polo jersey de manga corta hombre |
| Italiano : | Polo jersey uomo manica corta |
| Português : | Polo jersey de homem de manga curta |

| COLORS | PANTONE SERIGRAPHIE |
|---------------------|-----------------------|
| White | White |
| Black | Black |
| Navy | 433C |
| Red | 200C |
| Sky blue | 278C |
| Light khaki | 7764C |
| Grey heather | Based on 417C |
| French navy heather | Based on 432C |
| Oxford grey | Based on Cool gray 7C |

| MEASUREMENT | | | | | | | |
|---|----|-------|-------|-------|-----|-------|--|
| Description | S | M | L | XL | XXL | 3XL | |
| H05 (M) Hauteur totale / Total height | 70 | 72 | 74 | 76 | 78 | 80 | |
| W05 (M) 1/2 largeur poitrine / 1/2 chest width | 50 | 53 | 56 | 59 | 62 | 65 | |
| H15I (M) Longueur manche avec bord côte / Sleeve length with rib | 20 | 20,75 | 21,50 | 22,25 | 23 | 23,75 | |

| CARE LABEL | | | | |
|------------|--|--|--|--|
| | | | | |

| PACKING | |
|---------|--|
| Box | 30 pcs / box S-M => L:60cm W:40cm H:16cm GW:7.4kg NW:5.8kg L-XL => L:60cm W:40cm H:18cm GW:8.4kg NW:6.8kg XXL-3XL => L:60cm W:40cm H:20cm GW:9.7kg NW:8kg |