



REFERENCE : KP612

SIZES : 57cm_59cm

COMPOSITION :

Main material : Paper straw 100%vegetable fiber

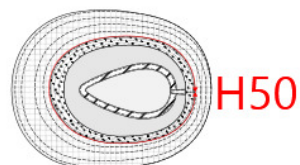
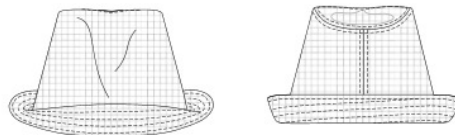
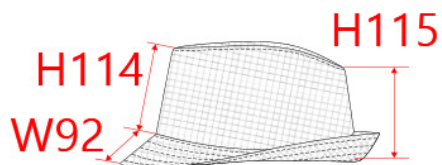
Lining : Polyester knit lining A inner lining. 100% Polyester

TECHNICAL DETAIL :

KP609 ribbon must be ordered separately in the corresponding size.

ARTICLE WEIGHT :

55gr/pc



DESCRIPTION
Français : Chapeau de paille style Panama rétro
English : Retro Panama-style straw hat
Nederlands : Strohoed in retro Panama-stijl
Deutsch : Strohhut im Panama-Retro-Stil
Español : Sombrero de paja estilo Panamá retro
Italiano : Cappello di paglia stile Panama rétro
Português : Chapéu de palha estilo Panamá retro

COLORS	PANTONE SERIGRAPHIE
Black	Black
White	White

MEASUREMENT		
Description	57cm	59cm
H50 Tour de tête / Head measurement	57	59
H114 Height of the crown on front part	9,50	9,50
H115 Height of the crown on back part	9	9
W92 Width of the brim	4,50	4,50

CARE LABEL

PACKING	
Box	50 pcs / box 57cm => L:52cm W:28cm H:43.5cm GW:5Kg NW:3.5Kg 59cm => L:50cm W:28cm H:43.5cm GW:5Kg NW:3.5Kg