

KARIBAN

REFERENCE : K508

SIZES : S_M_L_XL_XXL_3XL

COMPOSITION :

Fabric : Combed cotton single pique - 190 100%cotton

Fabric : Combed cotton / viscose single pique 90/10 - 190 For heather colors 90%cotton / 10%viscose

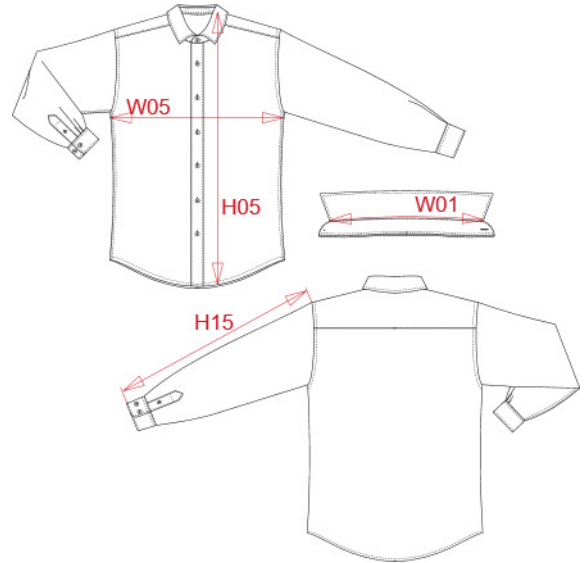
WEIGHT :

Fabric : 190 gsm

Fabric : 190 gsm

ARTICLE WEIGHT :

325 gr/pc



DESCRIPTION
Français : Chemise maille piquée manches longues
English : Long sleeve piqué knit shirt
Nederlands : Piqué overhemd lange mouwen
Deutsch : Langarmhemd aus Piqué
Español : Camisa piqué de manga larga
Italiano : Camicia piqué maniche lunghe
Português : Camisa em malha piqué de manga comprida

COLORS	PANTONE SERIGRAPHIE
Navy	433C
Oxford grey	Based on Cool gray 7C
Black	Black
White	White

MEASUREMENT						
Description	S	M	L	XL	XXL	3XL
W01 (M) Longueur encolure / Neckline length	40	41,25	42,50	43,75	45	46,25
H05 (M) Hauteur totale / Total height	73,50	75,50	77,50	79,50	81,50	83,50
W05 1/2 largeur poitrine à 1.5cm de l'emmanchure / 1/2 chest width at 1.5cm below armhole	51	54	57	60	63	66
H15B (M) Longueur manche avec poignet / Sleeve length with cuff	66	67	68	69	70	71

CARE LABEL

PACKING	
Box	24 pcs / box S => L:60cm W:40cm H:40cm GW:10.50kg NW:8.90kg M => L:60cm W:40cm H:40cm GW:10.80kg NW:9.20kg L => L:60cm W:40cm H:40cm GW:11.30kg NW:9.70 kg XL => L:60cm W:40cm H:40cm GW:11.80kg NW:10.20 kg XXL => L:60cm W:40cm H:40cm GW:12.40kg NW:10.80kg 3XL => L:60cm W:40cm H:40cm GW:12.70kg NW:11.10kg