

KARIBAN

REFERENCE : K486

SIZES : 6/8_8/10_10/12_12/14

COMPOSITION :

Main fabric : Brushed Combed Cotton / Polyester fleece 80/20 - 280 80%cotton / 20%polyester

Fabric 1 : Cotton single jersey (22/1) - 180 For hood lining, necktape. 100%cotton

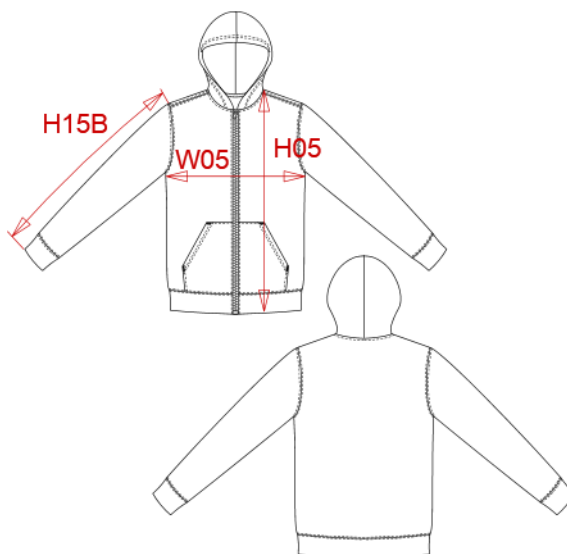
WEIGHT :

Main fabric : 280 gsm

Fabric 1 : 180 gsm

ARTICLE WEIGHT :

360 gr/pc



DESCRIPTION
Français : Sweat-shirt zippé capuche enfant
English : Kids' full zip hooded sweatshirt
Nederlands : Kindersweater met rits en capuchon
Deutsch : Kinder-Hoodie mit Reißverschluss
Español : Sudadera con capucha y cremallera contrastada de niños
Italiano : Felpa bambino con cappuccio full zip
Português : Sweatshirt de criança com capuz e fecho

COLORS	PANTONE SERIGRAPHIE
Black / Fine grey	Black / 877C
Navy / Fine grey	433C / 877C
Black / Red	Black / 200C
Black / Yellow	Black / 1235C
Red / White	200C / White
Oxford grey / Navy	Based on Cool gray 7C / 433C

MEASUREMENT						
Description	6/8	8/10	10/12	12/14		
H05 Hauteur totale avec BC / Total height with rib	49,50	54,50	59,50	64,50		
W05 1/2 largeur poitrine / 1/2 chest width	39	42	45	48		
H15B Longueur manche avec poignet / Sleeve length with cuff	47	51	55	59		

CARE LABEL

PACKING	
Box	20 pcs / box 6/8 => L:60cm W:40cm H:28cm GW:7.3kg NW:5.8kg 8/10 => L:60cm W:40cm H:28cm GW:7.9kg NW:6.4kg 10/12 => L:60cm W:40cm H:30cm GW:8.7kg NW:7.2kg 12/14 => L:60cm W:40cm H:30cm GW:9.5kg NW:8kg