

KARIBAN

REFERENCE : K261

SIZES : XS_S_M_L_XL_XXL

COMPOSITION :

Main fabric : Combed Cotton single jersey - 180 100%cotton
 Main fabric : Polyester / Cotton single jersey (20/1) 65/35 - 180
 For heather colors 65%polyester / 35%cotton
 Main fabric : Polyester / Cotton single jersey (20/1) 65/35 - 180
 For contrasted collar, collar band and inner front placket
 For heather colors 65%polyester / 35%cotton

WEIGHT :

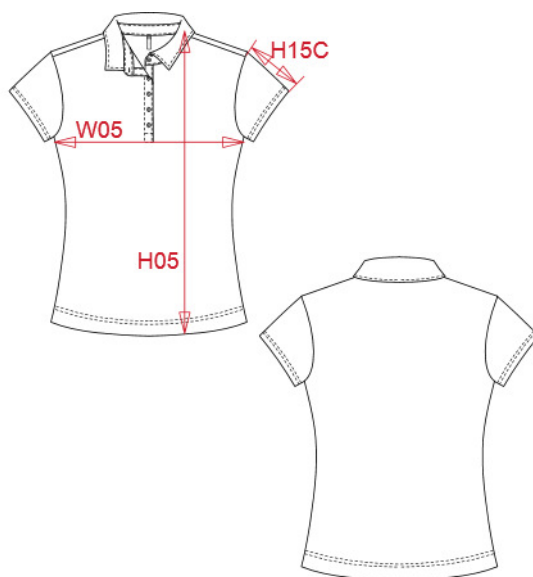
Main fabric : 180 gsm
 Main fabric : 180 gsm
 Main fabric : 180 gsm

TECHNICAL DETAIL :

Enzyme fabric wash

ARTICLE WEIGHT :

152 gr/pc



DESCRIPTION	
Français :	Polo jersey bicolore femme
English :	Ladies' two-tone jersey polo shirt
Nederlands :	Tweekleurige damespolo jersey
Deutsch :	Zweifarbigenes Jersey-Polohemd für Damen
Español :	Polo jersey bicolor de mujer
Italiano :	Polo jersey bicolore donna
Português :	Polo de senhora jersey bicolor

COLORS	PANTONE SERIGRAFIE
Black / Dark grey heather	Black / Based on 446C
Dark grey heather / Black	Based on 446C / Black
Navy / Dark grey heather	433C / Based on 446C
White / Navy	White / 433C
Black / Red	Black / 200C
White / Red	White / 200C
White / Dark grey heather	White / Based on 446C

MEASUREMENT							
Description	XS	S	M	L	XL	XXL	
H05 (L) Hauteur totale / Total height	59,25	61,25	63,25	65,25	67,25	69,25	
W05 (L) 1/2 largeur poitrine / 1/2 chest width	43	46	49	52	55	58	
H15C (L) Longueur manche courte / Short sleeve length	14	14,75	15,50	16,25	17	17,75	

CARE LABEL				

PACKING	
Box	50 pcs / box XS => L:60cm W:40cm H:25cm GW:8.20kg NW:7.20kg S => L:60cm W:40cm H:25cm GW:8.70kg NW:7.70kg M => L:60cm W:40cm H:25cm GW:9.20kg NW:8.20kg L => L:60cm W:40cm H:25cm GW:9.80kg NW:8.80kg XL => L:60cm W:40cm H:25cm GW:10.40kg NW:9.40kg XXL => L:60cm W:40cm H:25cm GW:11kg NW:10kg