

# KARIBAN

**REFERENCE :** K651

**SIZES :** XS\_S\_M\_L\_XL\_XXL

**COMPOSITION :**

Fabric 1 : 3 layers Softshell (Plain weave/Micropolar fleece)  
Polyester / Elastane 95/5 - 300 .

Lining : Polyester 210T - 60 For quilted body and hood lining,  
hood tunnel and sleeve lining 100%polyester

Lining 2 : Polyester polytricot - 120 For pocket sacks and inner  
front placket. 100%polyester

Padding : Polyfil 120 For quilted body lining 100%polyester

Padding : Polyfil 100 For quilted sleeve lining 100%polyester

**WEIGHT :**

Fabric 1 : 300 gsm

Lining : 60 gsm

Lining 2 : 120 gsm

Padding : 120 gsm

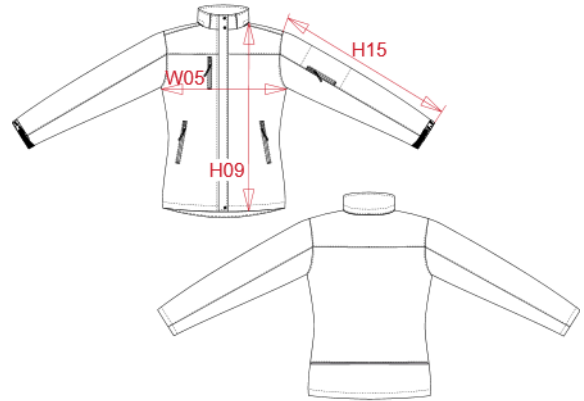
Padding : 100 gsm

**TECHNICAL DETAIL :**

BR: 3000gsm/24h / WP: 8000mm

**ARTICLE WEIGHT :**

980 gr/pc



DESCRIPTION
<b>Français :</b> Parka softshell doublée capuche femme
<b>English :</b> Ladies' hooded softshell lined parka
<b>Nederlands :</b> Gewatteerde softshell damesparka met capuchon
<b>Deutsch :</b> Damenparka Softshell wattiert mit Kapuze
<b>Español :</b> Parka Softshell forrada con capucha para mujer
<b>Italiano :</b> Parka donna softshell imbottito con cappuccio
<b>Português :</b> Parka Softshell acolchoada de senhora com capuz

COLORS	PANTONE SERIGRAPHIE
Black	Black
Navy	433C
Titanium	7540C

MEASUREMENT							
Description	XS	S	M	L	XL	XXL	
<b>H09 (L)</b> Hauteur totale devant / Front total height	65	67	69	71	73	75	
<b>W05 (L)</b> 1/2 largeur poitrine à 1.5cm de l'emmanchure / 1/2 chest width at 1.5cm below armhole	46	49	52	55	58	61	
<b>H15L (L)</b> Longueur manche longue / Long sleeve length	60	61	62	63	64	65	

CARE LABEL

PACKING	
Box	10 pcs / box XS-S => L:50cm W:35cm H:38cm GW:11.70kg NW:10.70kg M-L => L:55cm W:37cm H:38cm GW:12.80kg NW:11.70kg XL-XXL => L:60cm W:40cm H:38cm GW:14.20kg NW:13.00kg