

# KARIBAN

**REFERENCE :** K210

**SIZES :** XS\_S\_M\_L\_XL\_XXL

**COMPOSITION :**

Main fabric : Organic Pique cotton - 220 OCS certified 100% organic cotton

Main fabric : Organic Cotton/polyester pique 80/20 - 220 OCS blended certified

For heather colors 80%organic cotton / 20%polyester

Main fabric : Organic Cotton/viscose pique 70/30 - 220 OCS blended certified

For heather colors 70%organic cotton / 20%viscose

**WEIGHT :**

Main fabric : 220 gsm

Main fabric : 220 gsm

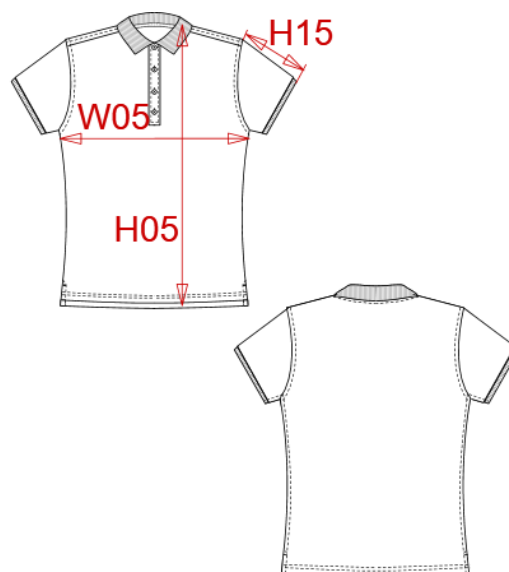
Main fabric : 220 gsm

**TECHNICAL DETAIL :**

OCS certified

**ARTICLE WEIGHT :**

186 gr/pc



DESCRIPTION
<b>Français :</b> Polo piqué BIO manches courtes femme
<b>English :</b> Ladies' organic piqué short sleeve polo shirt
<b>Nederlands :</b> Piqué-damespolo BIO korte mouwen
<b>Deutsch :</b> Damen Kurzarm-Polohemd. BIO-Baumwollpiqué
<b>Español :</b> Polo piqué orgánico de manga corta para mujer
<b>Italiano :</b> Polo piqué BIO donna maniche corte
<b>Português :</b> Polo piqué BIO de senhora de manga curta

MEASUREMENT							
Description	XS	S	M	L	XL	XXL	
<b>H28 (M)</b> Hauteur totale dos / Back total height	61	63	65	67	69	71	
<b>W05 (L)</b> 1/2 largeur poitrine à 1.5cm de l'emmanchure / 1/2 chest width at 1.5cm below armhole	43	46	49	52	55	58	
<b>H15I (L)</b> Longueur manche avec bord côte / Sleeve length with rib	12	12,40	13	13,75	14,30	14,80	

CARE LABEL

PACKING	
Box	50 pcs / box all sizes=> L:60cm W:40cm H:cm GW:kg NW:kg

COLORS	PANTONE SERIGRAPHIE
White	White
Black	Black
Navy	433C
Red	200C
Storm grey	425C
Mossy green	7771C
Cream	7604C
Grey heather	Based on 417C
French navy heather	Based on 432C
Wine heather	Based on 497C
Ocean blue heather	Based on 654C