

# KARIBAN

REFERENCE : K213

SIZES : XS\_S\_M\_L\_XL\_XXL\_3XL\_4XL\_5XL

**COMPOSITION :**

Main fabric : Combed cotton heavy single jersey ring spun pre shrunk - 280 For body, sleeves and tape shoulder seam 100% cotton

Fabric 2 : Cotton twill - 200 For collar and tabs 100%cotton

**WEIGHT :**

Main fabric : 280 gsm

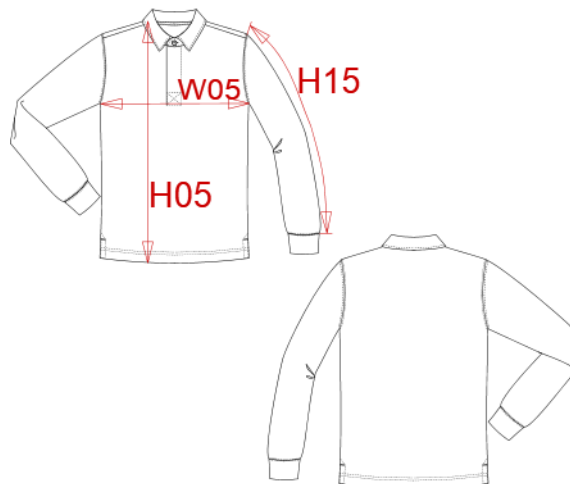
Fabric 2 : 200 gsm

**TECHNICAL DETAIL :**

Preshrunk

**ARTICLE WEIGHT :**

406 gr/pc



DESCRIPTION
<b>Français :</b> Polo rugby
<b>English :</b> Rugby polo shirt
<b>Nederlands :</b> Rugbypolo
<b>Deutsch :</b> Rugby-Polohemd
<b>Español :</b> Polo de rugby
<b>Italiano :</b> Polo rugby
<b>Português :</b> Polo rugby

COLORS	PANTONE SERIGRAPHIE
Navy / White	433C / White
Black / White	Black / White
Light grey / White	416C / White
Light royal blue / White	653C / White
Wine / White	504C / White
Dark grey / Black	447C / Black

MEASUREMENT									
Description	XS	S	M	L	XL	XXL	3XL	4XL	5XL
<b>H05 (M)</b> Hauteur totale / Total height	68	70	72	74	76	78	80	82	84
<b>W05 (M)</b> 1/2 largeur poitrine à 1.5cm de l'emmanchure / 1/2 chest width at 1.5cm below armhole	47	50	53	56	59	62	65	68	71
<b>H15B (M)</b> Longueur manche avec poignet / Sleeve length with cuff	66,25	67	67,75	68,50	69,25	70	70,75	71,50	72,25

CARE LABEL

PACKING	
Box	25 pcs / box XS => L:60cm W:40cm H:20cm GW:9.8kg NW:8.5kg S => L:60cm W:40cm H:20cm GW:10kg NW:8.7kg M => L:60cm W:40cm H:20cm GW:10.7kg NW:9.3kg L => L:60cm W:40cm H:20cm GW:11kg NW:9.7kg XL => L:60cm W:40cm H:22cm GW:11.7kg NW:10.3kg XXL => L:60cm W:40cm H:22cm GW:12.3kg NW:10.9kg 3XL => L:60cm W:40cm H:22cm GW:11.8kg NW:13.2kg 4XL => L:58cm W:36cm H:32cm GW:14.60kg NW:13.20kg 5XL => L:58cm W:36cm H:33cm GW:15.10kg NW:13.50kg