

# KARIBAN

**REFERENCE :** K521

**SIZES :** 6/8\_8/10\_10/12\_12/14

**COMPOSITION :**

Main fabric : Cotton poplin - 125 100%cotton

**WEIGHT :**

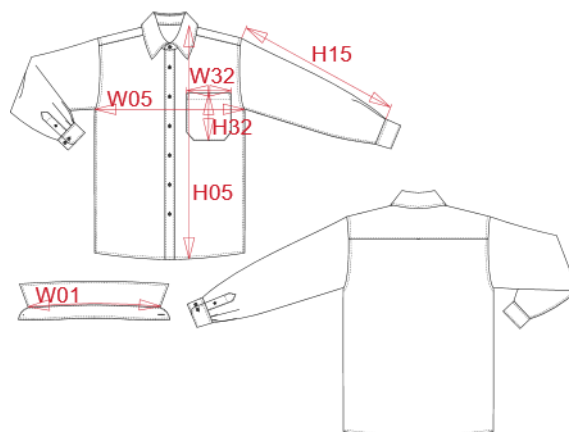
Main fabric : 125 gsm

**TECHNICAL DETAIL :**

Easy Care

**ARTICLE WEIGHT :**

145 gr/pc



DESCRIPTION
<b>Français :</b> Chemise popeline manches longues enfant
<b>English :</b> Kid's long sleeve popeline shirt
<b>Nederlands :</b>
<b>Deutsch :</b> LANGARM POPELINEHEMD FÜR KINDER
<b>Español :</b> CAMISA DE MANGA LARGA POPELINA PARA NIÑO
<b>Italiano :</b> CAMICIA BAMBINO POPELINE MANICHE LUNGHE
<b>Português :</b> Camisa de criança manga comprida em popeline

COLORS	PANTONE SERIGRAPHIE
White	White
Navy	433C

MEASUREMENT						
Description	6/8	8/10	10/12	12/14		
<b>W01</b> Longueur encolure / Neckline length	32,30	34	35,70	37,30		
<b>W05</b> 1/2 largeur poitrine / 1/2 chest width	39	42	45	48		
<b>H15</b> Longueur manche sans poignet / Sleeve length without cuff	40,60	44,60	48,60	52,60		
<b>H05</b> Hauteur totale dos / Back total height	53	59	64	69		
<b>H32</b> Hauteur poche devant / Front pocket height	11	11,50	11,50	12		
<b>W32</b> Largeur poche devant / Front pocket width	9	10	10	10,50		

CARE LABEL

PACKING	
Box	12 pcs / box 6/8 =>L:60cm W:40cm H:17cm GW:4.00kg 10/12=>L:60cm W:40cm H:17cm GW:4.38kg 12/14=> L:60cm W:40cm H:17cm GW:4.63kg