

# KARIBAN

**REFERENCE :** K544

**SIZES :** XS\_S\_M\_L\_XL\_XXL\_3XL\_4XL

**COMPOSITION :**

Main fabric : Cotton poplin - 125 For colors 100%cotton

**WEIGHT :**

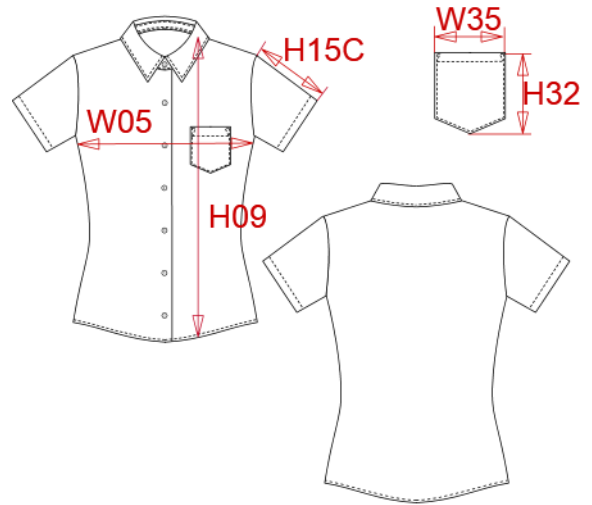
Main fabric : 125 gsm

**TECHNICAL DETAIL :**

Easy care

**ARTICLE WEIGHT :**

180 gr/pc



DESCRIPTION
<b>Français :</b> Chemise femme manches courtes
<b>English :</b> Ladies short sleeve easy care cotton poplin shirt
<b>Nederlands :</b> Dames blouse met korte mouwen
<b>Deutsch :</b> Pflegeleichte baumwolle popeline damen kurzarm bluse
<b>Español :</b> Camisa de manga corta para mujer
<b>Italiano :</b> Camicia donna maniche corte popeline
<b>Português :</b> Camisa de senhora manga curta em popeline tratamento fácil

COLORS	PANTONE SERIGRAPHIE
White	White
Black	Black
Navy	433C
Classic red	1945C
Zinc	447C
Bright sky	2708C

MEASUREMENT									
Description	XS	S	M	L	XL	XXL	3XL	4XL	
<b>W05 (M)</b> 1/2 largeur poitrine à 1.5cm de l'emmanchure / 1/2 chest width at 1.5cm below armhole	44,50	47,50	50,50	53,50	56,50	59,50	62,50	65,50	
<b>H09 (L)</b> Hauteur totale devant / Front total height	63	65	67	69	71	73	75	77	
<b>H15C (L)</b> Longueur manche courte / Short sleeve length	19,90	20,60	21,30	22	22,70	23,40	24,10	24,80	

CARE LABEL

PACKING	
Box	12 pcs / box XS => L:52cm W:34cm H:20cm GW:3.10kg NW:1.80kg S => L:52cm W:34cm H:20cm GW:3.20kg NW:1.90kg M => L:52cm W:34cm H:20cm GW:3.30kg NW:2.00kg L => L:52cm W:34cm H:20cm GW:3.40kg NW:2.10kg XL => L:52cm W:34cm H:20cm GW:3.50kg NW:2.20kg XXL => L:52cm W:34cm H:20cm GW:3.60kg NW:2.30kg 3XL => L:52cm W:34cm H:20cm GW:3.70kg NW:2.40kg 4XL => L:52cm W:34cm H:20cm GW:3.80kg NW:2.50kg