

KARIBAN

REFERENCE : K241

SIZES : S_M_L_XL_XXL_3XL_4XL

COMPOSITION :

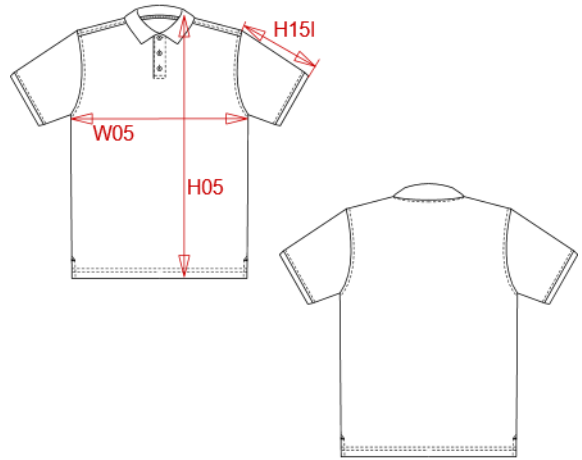
Main fabric : Combed cotton single pique - 220 100%cotton
Main fabric : Combed Cotton / Viscose single pique 90/10 - 220
90%cotton / 10%viscose

WEIGHT :

Main fabric : 220 gsm
Main fabric : 220 gsm

ARTICLE WEIGHT :

240 gr/pc



DESCRIPTION	
Français : Polo homme manches courtes	
English : Men's short sleeve pique polo shirt	
Nederlands : Heren polo met korte mouwen	
Deutsch : Herren kurzarm polo hemd pique	
Español : Polo de manga corta	
Italiano : Polo pique' uomo maniche corte	
Português : Polo pique manga curta	

MEASUREMENT							
Description	S	M	L	XL	XXL	3XL	4XL
H05 (M) Hauteur totale / Total height	70	72	74	76	78	80	82
W05 (M) 1/2 largeur poitrine / 1/2 chest width	50	53	56	59	62	65	68
H151 (M) Longueur manche avec bord côte / Sleeve length with rib	22,75	23,50	24,25	25	25,75	26,50	27,25

CARE LABEL				

PACKING	
Box	25 pcs / box S => L:60cm W:40cm H:18cm GW:7.20kg NW:6.20kg M => L:60cm W:40cm H:18cm GW:7.70kg NW:6.70kg L => L:60cm W:40cm H:18cm GW:8.00kg NW:7.00kg XL => L:60cm W:40cm H:18cm GW:8.40kg NW:7.40kg XXL => L:60cm W:40cm H:20cm GW:8.90kg NW:7.90kg 3XL => L:60cm W:40cm H:20cm GW:9.20kg NW:8.20kg 4XL => L:60cm W:40cm H:20cm GW:9.80kg NW:8.80kg

COLORS	PANTONE SERIGRAPHIE
White	White
Black	Black
Navy	433C
Red	200C
Dark grey	447C
Dark khaki	418C
Sky blue	278C
Orange	1585C
Yellow	1235C
Light royal blue	653C
Chocolate	439C
Tropical blue	7468C
Oxford grey	Based on Cool gray 7C
Kelly green	7727C
Fuchsia	7425C
Purple	7447C
Wine	504C
Lime	367C
Forest green	5605C
Light sand	480C